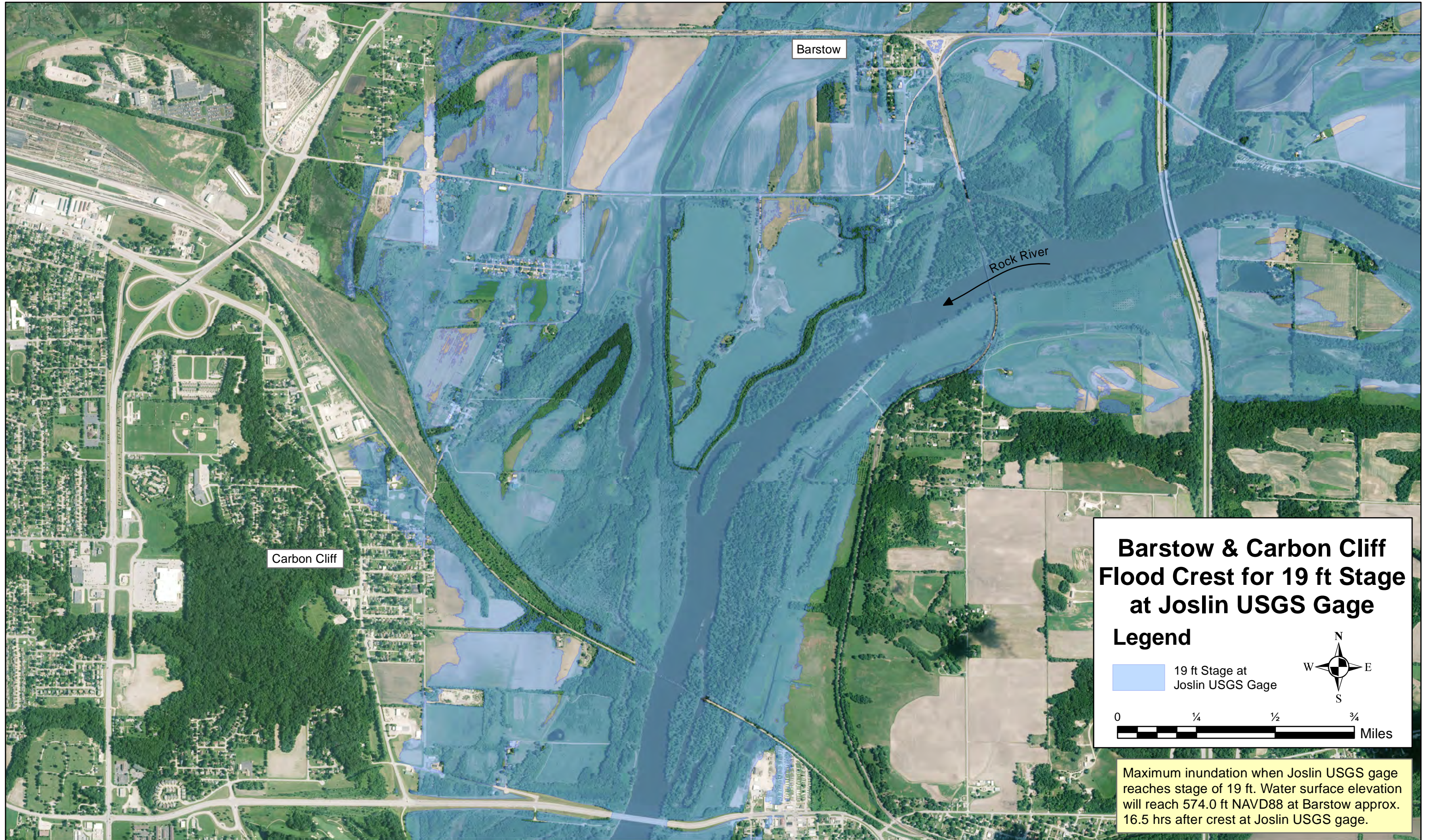




# Maximum Inundation for 19' Stage at Joslin USGS Gage




## Barstow & Carbon Cliff Flood Crest for 19 ft Stage at Joslin USGS Gage

**Legend**

 19 ft Stage at Joslin USGS Gage



 0 1/4 1/2 3/4 Miles

Maximum inundation when Joslin USGS gage reaches stage of 19 ft. Water surface elevation will reach 574.0 ft NAVD88 at Barstow approx. 16.5 hrs after crest at Joslin USGS gage.