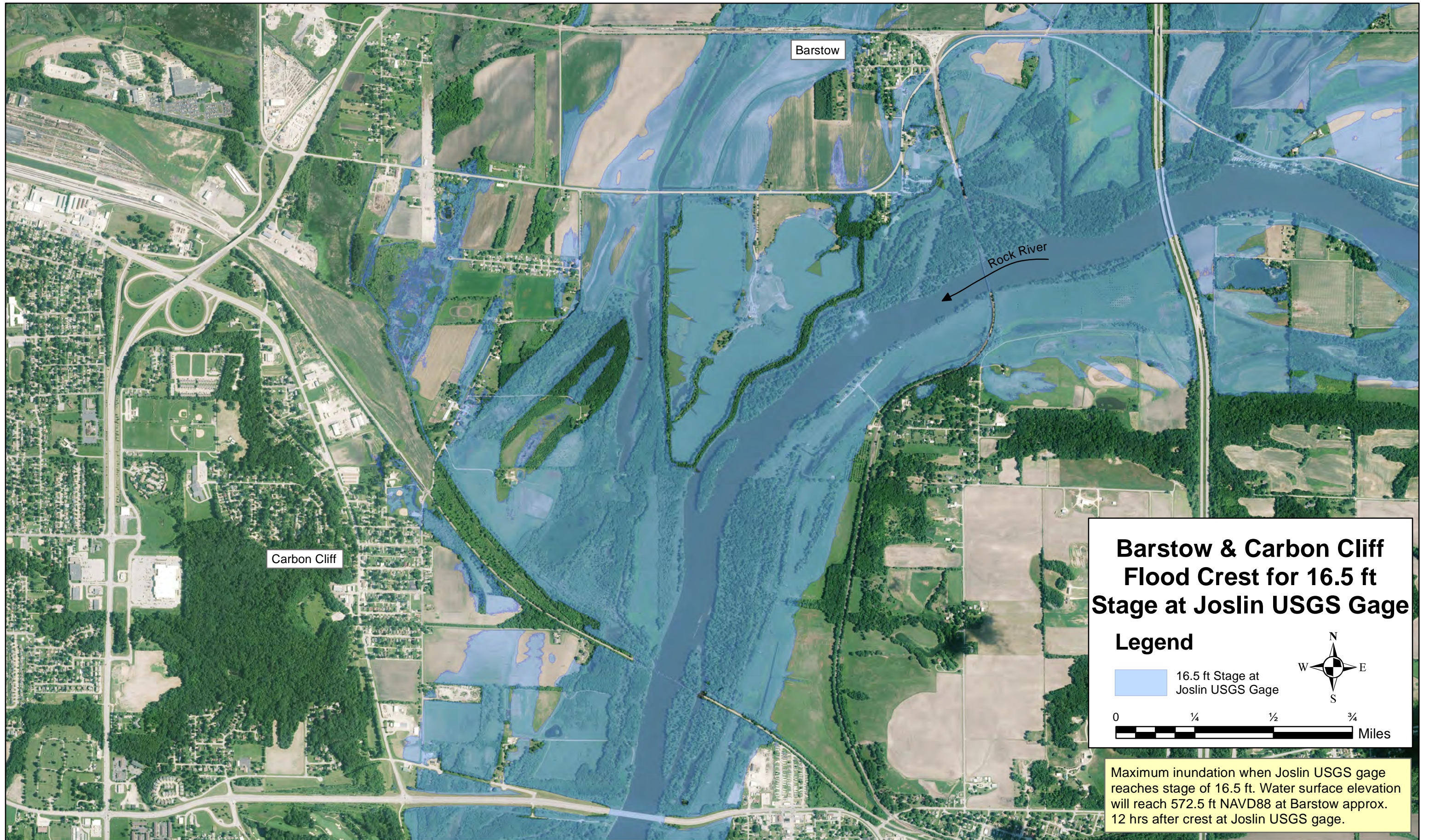
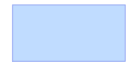


Maximum Inundation for 16.5' Stage at Joslin USGS Gage



Barstow & Carbon Cliff Flood Crest for 16.5 ft Stage at Joslin USGS Gage

Legend

 16.5 ft Stage at Joslin USGS Gage



0 1/4 1/2 3/4 Miles

Maximum inundation when Joslin USGS gage reaches stage of 16.5 ft. Water surface elevation will reach 572.5 ft NAVD88 at Barstow approx. 12 hrs after crest at Joslin USGS gage.